



HAUSCHILD GROUP
REAL ESTATE TEAM



Christine Hauschild
REALTOR



36 Halldorson Crescent

Detached, 2-Storey
Kanata Lakes/Heritage Hills

About this Property

Completely reimagined inside and out through a custom renovation in 2015 by architect Kayla Spruit and designer Tamara O'Leary of MYHome, this exceptional 6 bedroom, 5 bathroom residence offers over 5,100 square feet of impeccably finished living space across three levels. Refined architectural detail defines every space, while a private backyard oasis provides a natural extension of the home, creating a perfect setting for family life.

Awesome Features:

- ✓ Custom Renovations
- ✓ Spacious 3-Car Garage
- ✓ Premium Lot with No Rear Neighbours
- ✓ Vaulted Living Room
- ✓ Expansive Lower Level
- ✓ Hot Tub & Gunite Pool



Contact me for more information:
Christine Hauschild, Realtor®
Christine@hauschildgroup.com
613-799-5570
www.hauschildgroup.com





HAUSCHILD GROUP

REAL ESTATE TEAM



A grand first impression sets the tone in the spacious foyer with herringbone tile and a refined recessed ceiling detail. This welcoming entry opens to a striking main staircase with LED lights, rich engineered hardwood floors and a statement chandelier, creating an elegant transition into the heart of the home.



The chef's kitchen blends beauty and function with quartz counters, SS appliances, a Monogram six-burner gas cooktop w/ BBQ grill and double electric oven, Monogram built-in fridge w/ ice maker and water filtration system, farmhouse sink, Kitchen Aid streak-free dishwasher, and a Monogram drink/wine fridge. Ample cabinetry, pantry storage, a large island, and a breakfast bar make this a standout space.



E. & O.E. The information in this document is believed to be accurate, but is not warranted.



Contact me for more information:
Christine Hauschild, Realtor®
Christine@hauschildgroup.com
613-799-5570
www.hauschildgroup.com





HAUSCHILD GROUP
REAL ESTATE TEAM



Filled with natural light and views of the backyard and pool, the family room flows seamlessly from the kitchen and is anchored by a gas fireplace with custom millwork and a statement wood beam.

Ideally positioned between the kitchen and living room, the dining area is defined by a recessed ceiling with pot lights that add warmth and ambiance, creating a refined yet inviting space ideal for both intimate dinners and larger celebrations.



A true showstopper, the living room features soaring vaulted ceilings finished with white wood planks and dramatic statement chandeliers. Floor-to-ceiling stone surrounds the gas fireplace and television, creating a stunning focal point and an unforgettable sense of scale and design.

E. & O.E. The information in this document is believed to be accurate, but is not warranted.



Contact me for more information:
Christine Hauschild, Realtor®
Christine@hauschildgroup.com
613-799-5570
www.hauschildgroup.com



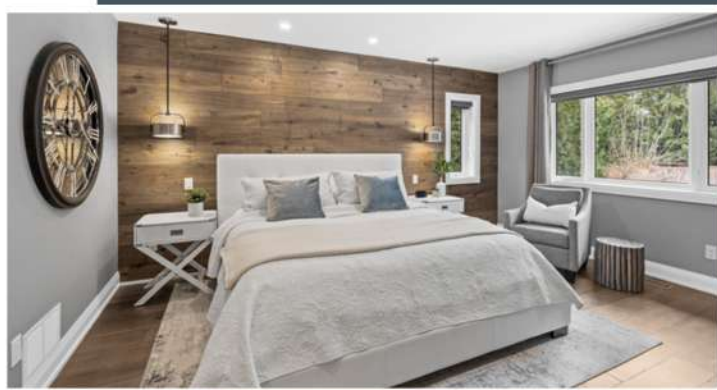


HAUSCHILD GROUP
REAL ESTATE TEAM

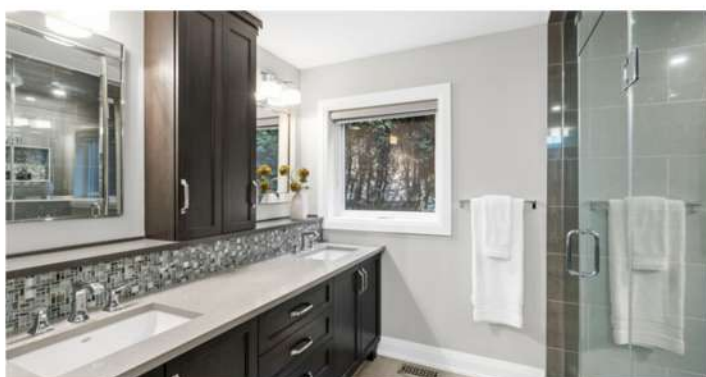


Tucked just off the living room behind a grand sliding barn door, the home office offers a quiet and inspiring workspace. Large windows provide peaceful views of the front of the home, while a striking glass light fixture adds style to this spacious and functional space.

Located on the main level, the primary suite is a serene retreat accented by decorative wood paneling, elegant pendant lighting and a built-in dresser with quartz countertop. The spacious custom walk-in closet features built-in organizers, integrated laundry hampers, and a quartz countertop dresser, providing both convenience and luxury.



The spa-inspired ensuite features heated floors and a quartz double vanity with dark cabinetry, offering both style and ample storage. A spacious walk-in steamer shower creates a luxurious daily escape, while a separate toilet area adds privacy and function to this beautifully appointed space.



E. & O.E. The information in this document is believed to be accurate, but is not warranted.



Contact me for more information:
Christine Hauschild, Realtor®
Christine@hauschildgroup.com
613-799-5570
www.hauschildgroup.com





HAUSCHILD GROUP

REAL ESTATE TEAM



The first two bedrooms on the upper level are currently connected by double sliding doors and can easily be converted back. This flexible layout lends itself perfectly to an in-law or teen suite, offering versatility to suit a variety of lifestyle needs.



A third spacious bedroom on this level offers a large walk-in closet with built-ins and a bright private ensuite. Designed with comfort and privacy in mind, this space is well suited for family or guests seeking their own private space.

E. & O.E. The information in this document is believed to be accurate, but is not warranted.



Contact me for more information:
Christine Hauschild, Realtor®
Christine@hauschildgroup.com
613-799-5570
www.hauschildgroup.com

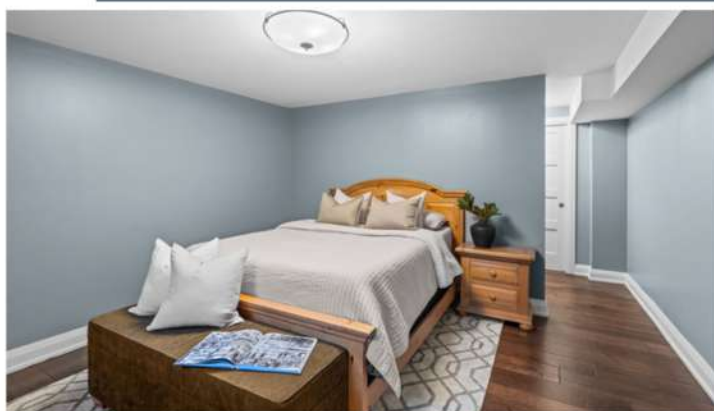




HAUSCHILD GROUP
REAL ESTATE TEAM



With over 1,400 square feet of finished living space, the lower level is ideal for hosting and everyday enjoyment. The inviting recreation room is centred around a beautiful gas fireplace, making it the perfect setting for movie nights, while a separate games room offers ample space for family activities.



This level includes two additional bedrooms, one with a convenient cheater ensuite, along with a large utility area currently used as a home gym. Two expansive storage rooms offer incredible potential for future customization, hobbies, or additional living space.

E. & O.E. The information in this document is believed to be accurate, but is not warranted.



Contact me for more information:
Christine Hauschild, Realtor®
Christine@hauschildgroup.com
613-799-5570
www.hauschildgroup.com





HAUSCHILD GROUP
REAL ESTATE TEAM



A private backyard oasis backing onto a scenic path with no rear neighbours, this outdoor space is framed by mature foliage and wrought iron and cedar fencing. Offering outstanding privacy and a natural setting, it creates a peaceful extension of the home year-round.



Thoughtfully designed, this outdoor space includes a large cedar deck, a covered BBQ area with tiled accent wall located off the kitchen, and a stone patio. A resort-style 8' deep saltwater gunite pool, Arctic Spa hot tub, irrigation system (front/back & flowerbeds), and pool shed complete this exceptional backyard.

E. & O.E. The information in this document is believed to be accurate, but is not warranted.



Contact me for more information:
Christine Hauschild, Realtor®
Christine@hauschildgroup.com
613-799-5570
www.hauschildgroup.com

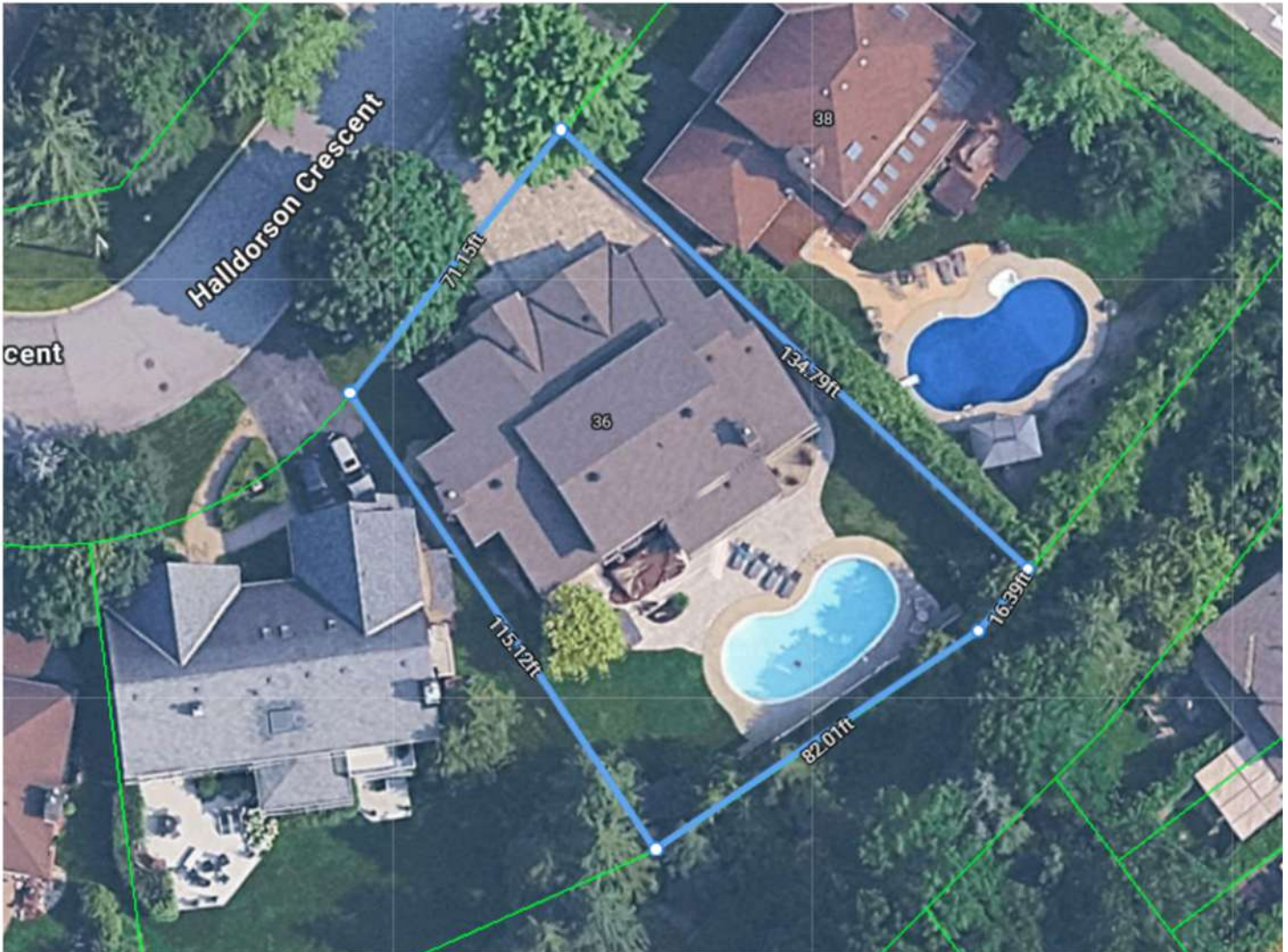




HAUSCHILD GROUP
REAL ESTATE TEAM

Lot Measurements as per GeoWarehouse

71.15 ft x 115.12 ft x 82.01 ft x 16.39 ft x 134.79 ft



E. & O.E. The information in this document is believed to be accurate, but is not warranted.



Contact me for more information:
Christine Hauschild, Realtor®
Christine@hauschildgroup.com
613-799-5570
www.hauschildgroup.com





36 Halldorson Crescent Kanata Lakes/Heritage Hills

Builder

Gerhard Linse

Model

Custom

Year Built

~1989

Closing Date

To Be Arranged

Property Tax

~\$10,850.59/2025 as per tax bill

Rental Items

Hot Water Tank
~\$48.30/month

Hydro

~\$195/month

Water/Sewer

~\$142/every 2nd month

Gas

~\$170/month

Inclusions

Monogram built-in fridge w/ ice maker & water filtration system, Monogram six-burner gas cooktop w/ BBQ grill and double electric oven, Kitchen Aid streak-free dishwasher, hood fan, Monogram drink/wine fridge, microwave, washer, dryer, all light fixtures, in-ceiling speakers in kitchen, dining room, living room & exterior flower pot, 2 Sonos receivers in office, dining room shelf, bathroom mirrors, drapery tracks & rods, drapes, blinds, TVs w/ wall brackets, soundbars, smart thermostat, HRV, humidifier, central vac, radiant floor heating in primary ensuite, A/C, ring doorbell, Arctic Spa hot tub, gas pool heater, pool pump, pool shed, irrigation system in front/back & flower beds, natural gas hookup for BBQ, garage door opener w/ 3 remotes

Exclusions

Modem in office, corner office cabinet, all free-standing speakers, mirror in laundry room, mirror in hallway on 2nd level, mirror in primary, pool table/dining table, BBQ, wine fridge in LL, workbench in garage, shelving in garage

Updates & Upgrades

- ~2025 Pool heater
- ~2024 Pool shed roof
- ~2024 Epoxy pool deck coating
- ~2024 Cedar & wrought iron fencing
- ~2023 Backyard stone patio
- ~2020 Pool pump
- ~2020 Cedar deck and tiled accent wall
- ~2017 Stone driveway (regROUTED in 2023)
- ~2017 Front steps, landing, stone pillars and trim
- ~2015 Pool shed siding
- ~2015 Pool saltwater system and filter system
- ~2015 Custom renovations inside & exterior by MYHome

Hot Water Tank

~2024

Furnace

~2010

A/C

~2011

Windows

~2015

Flooring

~2015 engineered hardwood

Roof

~2015

Stove

~2015

Fridge

~2015

Washer

~2023

Dryer

~2023

Dishwasher

~2025

Gunitite Pool

~1993



E. & O.E. The information in this document is believed to be accurate, but is not warranted.



Contact me for more information:
Christine Hauschild, Realtor®
Christine@hauschildgroup.com
613-799-5570
www.hauschildgroup.com





HAUSCHILD GROUP

REAL ESTATE TEAM

What's Nearby

Transit

The nearest street-level transit stop is Knudson at Nelford

Safety

Queensway Carleton Hospital | 3045 Baseline Road

Fire Station | 1021 Teron Road

Police Station | 1921 Provincial Police Lane

Parks And Recreation

Craig Park

- 2 minute walk | 16 Leacock Drive

- Trail

Sue Nickerson Park

- 5 minute walk | 88 Knudson Drive

- Playground

Gow Park

- 6 minute walk | 9 Beaverbrook Road

- Playground, skating rink, 2 basketball courts, sports field, 2 ball diamonds, sports court



Schools in the Area

Public Schools

Stephen Leacock Public School | 25 Leacock Drive

W. Erskine Johnston Public School | 50 Varley Drive

Earl Of March Secondary School | 4 The Pkwy



Catholic Schools

Georges Vanier Elementary School | 40 Varley Drive

All Saints High School | 5115 Kanata Avenue



French & French Catholic Schools

École élémentaire publique Grande-Ourse | 1385 Halton Terrace

École secondaire publique Maurice-Lapointe | 17 Bridgestone Drive

École élémentaire catholique Saint-Rémi | 100 Walden Drive

École secondaire catholique Paul-Desmarais | 5315 Abbott St E

E&OE schools determined through individual school board locator tools.
Please check with boards for individual needs*

E. & O.E. The information in this document is believed to be accurate, but is not warranted.



Contact me for more information:
Christine Hauschild, Realtor®
Christine@hauschildgroup.com
613-799-5570
www.hauschildgroup.com

