



HAUSCHILD GROUP  
REAL ESTATE TEAM



Christine Hauschild  
REALTOR®

## 3-Storey, Townhome

### Glebe - Old Ottawa East

Welcome to 206 Jeremiah Kealey, a stunning 3-storey END UNIT townhome by Barry Hobin, nestled in sought-after Greystone Village. With 3 bedrooms, 3 baths, and sun-filled spaces throughout, this modern home offers hardwood floors, 9' ceilings, and a chef-inspired kitchen with quartz countertops, gas range, and wine fridge.

# 206 Jeremiah Kealey Street

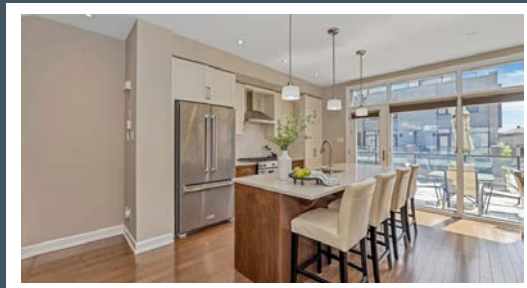
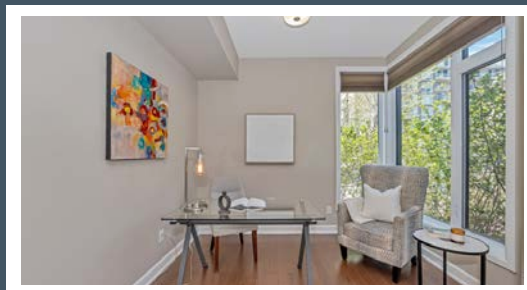
Glebe-Old Ottawa East

### About this Property

Enjoy two balconies plus a private rooftop terrace with gas and water hookups. The ground level features a bright den, utility room, and oversized garage. Steps to Main Street, Rideau River, UOttawa, and hospitals. Enjoy urban living in one of Ottawa's most walkable areas.

### Awesome Features:

- ✓ 9' ceilings on 2<sup>nd</sup> level & hardwood throughout
- ✓ Gas Fireplace & Custom Built Ins
- ✓ Kitchen with quartz counters, gas range, wine fridge + 2 balconies
- ✓ Close Proximity to Lansdown, Elgin St., Byward Market
- ✓ Rooftop terrace with gas + water hookups
- ✓ Primary suite with Juliet balcony



Contact me for more information:  
Christine Hauschild, Realtor®  
Christine@hauschildgroup.com  
613-799-5570  
www.hauschildgroup.com







HAUSCHILD GROUP  
REAL ESTATE TEAM

Lot Measurements as per GeoWarehouse

Approx. 20.91' wide at front x 73.4' deep x 20.91' wide at rear



E. & O.E. The information in this document is believed to be accurate, but is not warranted.



Contact me for more information:  
Christine Hauschild, Realtor®  
Christine@hauschildgroup.com  
613-799-5570  
www.hauschildgroup.com





**HAUSCHILD GROUP**  
REAL ESTATE TEAM

# 206 Jeremiah Kealey Street

## Glebe - Old Ottawa East

**Builder**  
EQ Homes

**Designed By**  
Barry Hobin

**Year Built**  
~2018

**Closing Date**  
60 days or To Be Arranged

**Property Tax**  
~\$9,136.24/2024 as per  
homeowner

**Rental Items**  
Enercare Tankless Water Heater:  
~\$61/month

**Hydro**  
~\$108/month

**Water/Sewer**  
~\$47.40/month

**Gas**  
~\$89.25/month

**Association Fee**  
~\$120/month Incl. covering snow removal (not front walk), and shared area insurance

### Inclusions

Fridge, stove, dishwasher, washer, dryer, hood fan, microwave, all light fixtures, drapery tracks & rods, all window blinds, all drapes, TV wall brackets & TV in family room, garage door opener w/ 2 remotes + 1 key pad, wine fridge, fridge in garage, freezer in garage

### Updates & Upgrades

- Built in Shelves in Living Room and sideboard in Kitchen
- September 2024 - New A/C Unit and Thermostat unit
- April 2025 - Professional Painting: Ceilings, Walls, Inside Doors and Trim
- June 2025 - New LG Front load 5.2 cu. ft Washer and 3600W 7.4 cu. ft. Dryer installed w/ 1 year warranty.

**Hot Water Tank**  
~2018

**Furnace**  
~2018

**A/C**  
~2024

**Windows**  
~2018

**Flooring**  
~2018

**Roof**  
~2018

**Stove**  
~2018

**Fridge**  
~2018

**Washer**  
~2025

**Dryer**  
~2025

**Dishwasher**  
~2018

**Tankless Water Heater**  
~2018



E. & O.E. The information in this document is believed to be accurate, but is not warranted.



Contact me for more information:  
Christine Hauschild, Realtor®  
Christine@hauschildgroup.com  
613-799-5570  
www.hauschildgroup.com







# HAUSCHILD GROUP

REAL ESTATE TEAM

## What's Nearby

### Transit

The closest LRT - Confederation Line 1 at Lees, 10 minute walk

The nearest street-level transit stop is U St Paul U

### Safety

The Ottawa Hospital - General Campus - 2.2km away

Fire State 12 - 0.96km away

Ottawa Central/West Police - 1.03km away

### Parks and Recreation

Brantwood Park - 39 Onslow Crescent - 2 minute walk

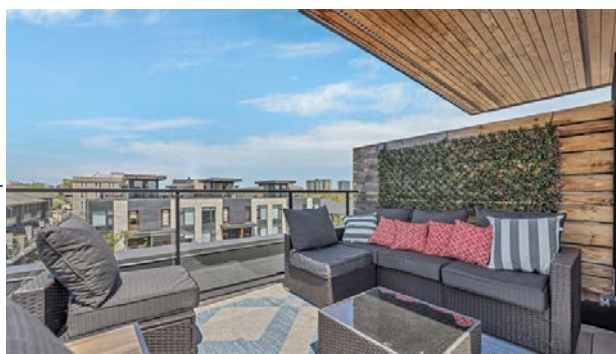
- Playground, Wading Pool, Tennis Courts, Basketball Courts, Ball Diamond, Rink and Walking Trail

Robert F Leggett Park/Children's Garden - 321 Main Street - 4 minute walk

- Community Garden

Springhurst Park - 24 Brunswick Street - 5 minutes walk

- Playground, Basketball Court, Ball Diamond and Walking Trail



## Schools in the Area

### Public Schools

Viscount Alexander PS | 55 Mann Avenue

Elgin Street PS | 310 Elgin Street

Hopewell Avenue PS | 17 Hopewell Avenue

Glebe CI | 212 Glebe Avenue

Hillcrest HS | 1900 Dauphin Road

Lady Evelyn Alternative School | 63 Evelyn Avenue

### Catholic Schools

Corpus Christi Catholic ES | 1798 Lyon Street South

Immaculata HS | 140 Main Street

### French & French Catholic Schools

ÉEP Francojeunesse | 119 Osgoode Street

ÉSP De La Salle | 501 Old St Patrick Street

ÉEC Sainte-Anne | 255 235 Beausoleil Drive

ÉEC au coeur d'Ottawa | 88 Main Street

ÉSC Franco-Cité | 623 Smyth Road

E&OE schools determined through individual school board locator tools.

Please check with boards for individual needs\*

E. & O.E. The information in this document is believed to be accurate, but is not warranted.



Contact me for more information:  
Christine Hauschild, Realtor®  
Christine@hauschildgroup.com  
613-799-5570  
www.hauschildgroup.com

