



HAUSCHILD GROUP
REAL ESTATE TEAM



Christine Hauschild
REALTOR®

3-Storey, Townhome

Glebe - Old Ottawa East

Welcome to 206 Jeremiah Kealey, a stunning 3-storey END UNIT townhome by Barry Hobin, nestled in sought-after Greystone Village. With 3 bedrooms, 3 baths, and sun-filled spaces throughout, this modern home offers hardwood floors, 9' ceilings, and a chef-inspired kitchen with quartz countertops, gas range, and wine fridge.

206 Jeremiah Kealey Street

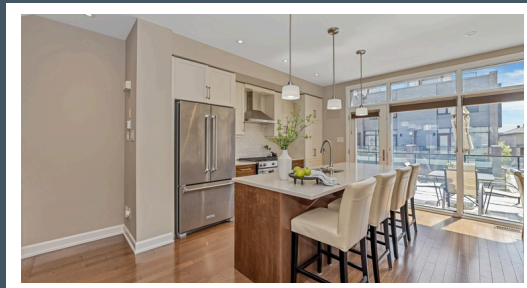
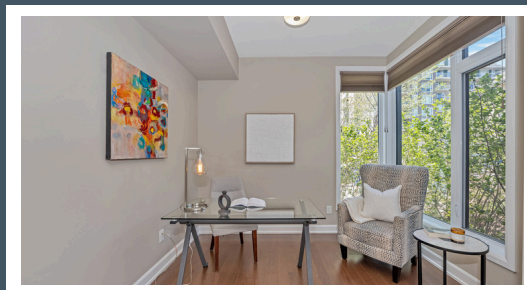
Glebe-Old Ottawa East

About this Property

Enjoy two balconies plus a private rooftop terrace with gas and water hookups. The ground level features a bright den, utility room, and oversized garage. Steps to Main Street, Rideau River, UOttawa, and hospitals. Enjoy urban living in one of Ottawa's most walkable areas.

Awesome Features:

- ✓ 9' ceilings on 2nd level & hardwood throughout
- ✓ Gas Fireplace & Custom Built Ins
- ✓ Kitchen with quartz counters, gas range, wine fridge + 2 balconies
- ✓ Close Proximity to Lansdown, Elgin St., Byward Market
- ✓ Rooftop terrace with gas + water hookups
- ✓ Primary suite with Juliet balcony



Contact me for more information:
Christine Hauschild, Realtor®
Christine@hauschildgroup.com
613-799-5570
www.hauschildgroup.com





HAUSCHILD GROUP
REAL ESTATE TEAM

Lot Measurements as per GeoWarehouse

Approx. 20.91' wide at front x 73.4' deep x 20.91' wide at rear



E. & O.E. The information in this document is believed to be accurate, but is not warranted.



Contact me for more information:
Christine Hauschild, Realtor®
Christine@hauschildgroup.com
613-799-5570
www.hauschildgroup.com





206 Jeremiah Kealey Street

Glebe - Old Ottawa East

Builder
EQ Homes

Designed By
Barry Hobin

Year Built
~2018

Closing Date
60 days or To Be Arranged

Property Tax
~\$9,136.24/2024 as per
homeowner

Rental Items
Enercare Tankless Water Heater:
~\$61/month
A/C: ~\$99.99/m (incl. protection
plan for A/C & Furnace)

Hydro
~\$108/month

Water/Sewer
~\$47.40/month

Gas
~\$89.25/month

Association Fee
~\$120/month Incl. covering snow removal (not front walk), and shared area insurance

Inclusions

Fridge, stove, dishwasher, washer, dryer, hood fan, microwave, all light fixtures, drapery tracks & rods, all window blinds, all drapes, TV wall brackets & TV in family room, garage door opener w/ 2 remotes + 1 key pad, wine fridge, fridge in garage, freezer in garage

Updates & Upgrades

- Built in Shelves in Living Room and sideboard in Kitchen
- September 2024 - New A/C Unit and Thermostat unit
- April 2025 - Professional Painting: Ceilings, Walls, Inside Doors and Trim
- June 2025 - New LG Front load 5.2 cu. ft Washer and 3600W 7.4 cu. ft. Dryer installed w/ 1 year warranty.

Hot Water Tank
~2018

Furnace
~2018

A/C
~2024

Windows
~2018

Flooring
~2018

Roof
~2018

Stove
~2018

Fridge
~2018

Washer
~2025

Dryer
~2025

Dishwasher
~2018

Tankless Water Heater
~2018



E. & O.E. The information in this document is believed to be accurate, but is not warranted.



Contact me for more information:
Christine Hauschild, Realtor®
Christine@hauschildgroup.com
613-799-5570
www.hauschildgroup.com





HAUSCHILD GROUP

REAL ESTATE TEAM

What's Nearby

Transit

The closest LRT - Confederation Line 1 at Lees, 10 minute walk

The nearest street-level transit stop is U St Paul U

Safety

The Ottawa Hospital - General Campus - 2.2km away

Fire State 12 - 0.96km away

Ottawa Central/West Police - 1.03km away

Parks and Recreation

Brantwood Park - 39 Onslow Crescent - 2 minute walk

- Playground, Wading Pool, Tennis Courts, Basketball Courts, Ball Diamond, Rink and Walking Trail

Robert F Leggett Park/Children's Garden - 321 Main Street - 4 minute walk

- Community Garden

Springhurst Park - 24 Brunswick Street - 5 minutes walk

- Playground, Basketball Court, Ball Diamond and Walking Trail



Schools in the Area

Public Schools

Viscount Alexander PS | 55 Mann Avenue

Elgin Street PS | 310 Elgin Street

Hopewell Avenue PS | 17 Hopewell Avenue

Glebe CI | 212 Glebe Avenue

Hillcrest HS | 1900 Dauphin Road

Lady Evelyn Alternative School | 63 Evelyn Avenue

Catholic Schools

Corpus Christi Catholic ES | 1798 Lyon Street South

Immaculata HS | 140 Main Street

French & French Catholic Schools

ÉEP Francojeunesse | 119 Osgoode Street

ÉSP De La Salle | 501 Old St Patrick Street

ÉEC Sainte-Anne | 255 235 Beausoleil Drive

ÉEC au coeur d'Ottawa | 88 Main Street

ÉSC Franco-Cité | 623 Smyth Road

E&OE schools determined through individual school board locator tools.

Please check with boards for individual needs*

E. & O.E. The information in this document is believed to be accurate, but is not warranted.



Contact me for more information:
Christine Hauschild, Realtor®
Christine@hauschildgroup.com
613-799-5570
www.hauschildgroup.com

