



HAUSCHILD GROUP
REAL ESTATE TEAM



Christine Hauschild
REALTOR®

Detached, Bungalow

Bel-Air Heights/Copeland Park

Beautifully renovated home situated on a quiet, tree-lined neighborhood. Features refinished hardwood, a modern kitchen, finished basement with luxury bath, custom walk-in closet & private backyard.

1746 Ainsley Drive

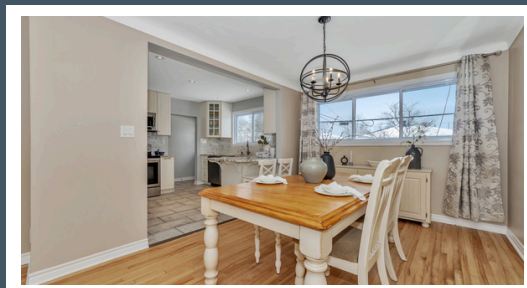
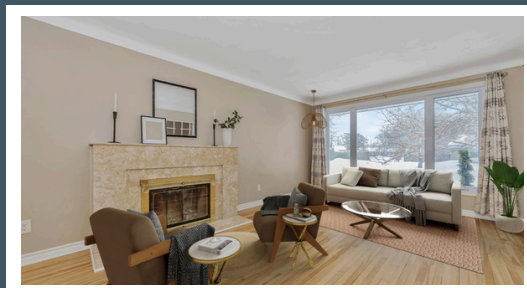
Bel-Air Heights/Copeland Park

About this Property

Get ready to fall in love with this 3+1-bed, 3-bath home in the heart of Bel Air Heights! Nestled on a 53' x 100' lot, this bungalow is located in a fantastic location, just steps to NCC trails, quick access to 417, new LRT stop, OC Transpo, Algonquin College & College Square +++

Awesome Features:

- ✓ Gourmet kitchen
- ✓ Bright and open layout
- ✓ Wood-burning fireplace with marble surround
- ✓ Family-friendly location
- ✓ Gorgeous backyard
- ✓ Fully finished basement with luxury bath



Contact me for more information:
Christine Hauschild, Realtor®
Christine@hauschildgroup.com
613-799-5570
www.hauschildgroup.com





HAUSCHILD GROUP
REAL ESTATE TEAM

1746 Ainsley Drive

Bel-Air Heights/Copeland Park

Builder

Campeau

Model

B-3

Year Built

~1959 year

Closing Date

To Be Arranged

Property Tax

~\$5,023.22/2024

Rental Items

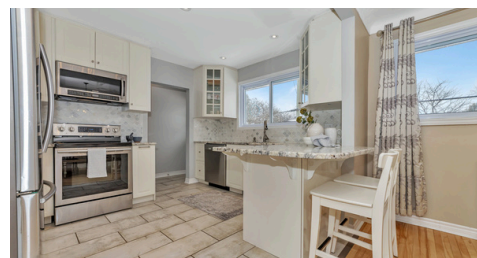
None

Hydro

~\$110/month

Water/Sewer

~\$140/2 months



Gas

~\$90/month

Inclusions

Fridge, stove, dishwasher, washer, dryer, hood fan, air conditioner, microwave, all light fixtures, all drapery tracks & rods, all window blinds, all drapes, shed, play structure, TV wall mounts, hot water tank

Exclusions

Trampoline, TV's

Updates & Upgrades

- ~ 2015 - Upstairs bathroom renovated
- ~ 2017 Kitchen Renovated
- ~ 2019 LL Windows replaced
- ~ 2015 Upstairs Window replaced
- ~ 2017 Powder Room added
- ~ 2019 Egress Window Installed
- ~ 2015 Driveway repaved
- ~ 2017 Front Hall Closet added
- ~ 2019 Basement Finished

Hot Water Tank

~2019

Furnace

~2015

A/C

~2019

Windows

~2015

Flooring

~Original, LL
2019

Roof

~2007

Stove

~2017

Fridge

~2017

Washer

~2019

Dryer

~2019

Dishwasher

~2022

E. & O.E. The information in this document is believed to be accurate, but is not warranted.



Contact me for more information:
Christine Hauschild, Realtor®
Christine@hauschildgroup.com
613-799-5570
www.hauschildgroup.com







HAUSCHILD GROUP

REAL ESTATE TEAM

What's Nearby

Ainsley Park - Ainsley Drive - 3 minute walk
Ball Diamond

Agincourt Park - Albany Drive - 3 minute walk
2 Playgrounds
Wading Pool
Sports field
Ball Diamond
Rink
Multi-Use Pad

Copeland Park - Navaho Drive - 9 minute walk
Playground

Navaho Park - Navaho Drive - 7 minute walk
2 Tennis Courts



Schools in the Area

Public Schools

Agincourt Road PS | 1250 Agincourt Road
Pinecrest PS | 1281 Chemin McWatters
Woodroffe HS | 2410 Georgina Drive



Catholic Schools

St. Daniel School | 1313 Field Street
Frank Ryan Catholic Intermediate School | 128 Chesterton Drive
Notre Dame HS | 710 Broadview Avenue



French & French Catholic Schools

ÉEP Charlotte Lemieux | 2093 Bel-Air Drive
ÉSP Omer-Deslauriers | 159 Chesterton Drive
ÉÉC Terre-des-Jeunes | 1303 Fellows Road

E&OE schools determined through individual school board locator tools.

Please check with boards for individual needs*

E. & O.E. The information in this document is believed to be accurate, but is not warranted.



Contact me for more information:
Christine Hauschild, Realtor®
Christine@hauschildgroup.com
613-799-5570
www.hauschildgroup.com

